

Black Clutch Tutorial ©2014 France Nadeau

For this clutch, I recommend a special fabric. I love the fabrics already embroidered that we can buy. They make really chic clutches.

Material:

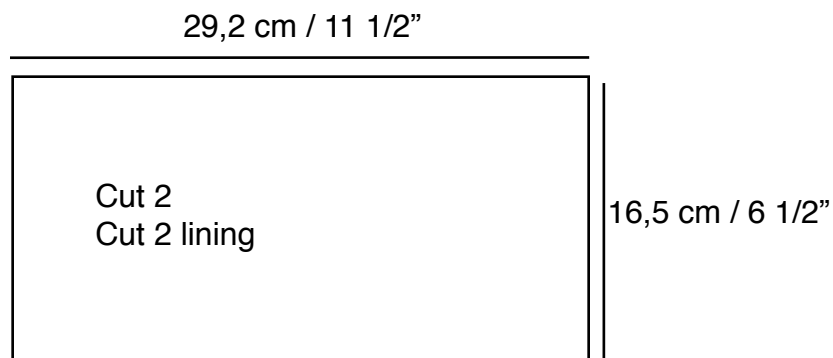
- Black fabric for the outside
- Black fabric for lining
- Black zipper
- Black sewing thread
- Black ribbon



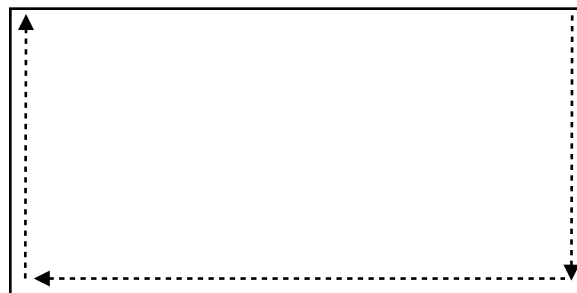
Instructions:

All the sewing is made at a distance of 6 mm / 1/4" from the edges.

1. Cut 2 rectangles in your outside fabric and 2 rectangles in your lining fabric (16,5 x 29,2 cm / 6 1/2" x 11 1/2").



2. Place together the two rectangles cut from your outside fabric, right sides together. Sew three sides. Turn inside out and iron the seams.



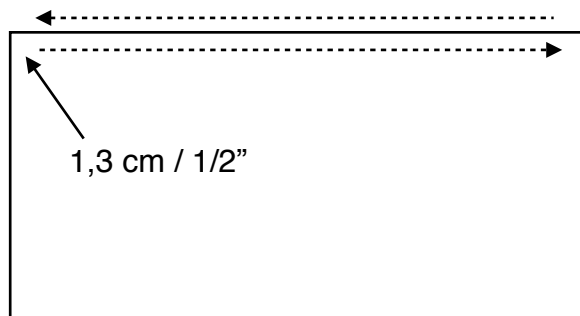
3. Repeat with the lining fabric. Do not turn inside out.

Black Clutch Tutorial ©2014 France Nadeau

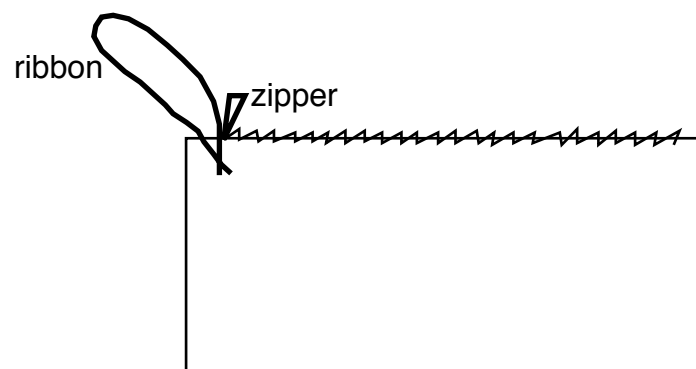
4. Insert the lining fabric inside the outside fabric, taking care to match the seams. Fold the top edges (6 mm / 1/4") between the two layers of fabric.
5. Sew the edges on a distance of 5 cm / 2" at both tips, i.e. 2,5 cm / 1" on each side of the seams (the sewing at 3 mm / 1/8" from the edge).



6. Insert the zipper inside the opening and maintain into place with pins. Sew each side of the zipper, starting at 1,3 cm / 1/2" from one side and stopping at 1,3 cm / 1/2" from the other (the sewing at 3 mm / 1/8" from the edge).

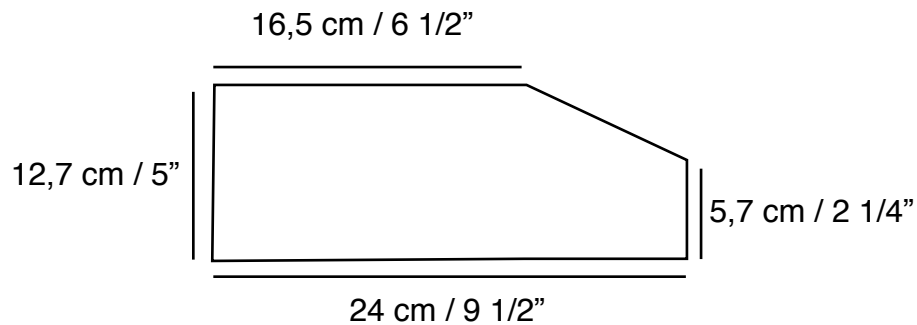


7. Sew by hand the two unattached tips of the zipper to fasten them to the lining inside the bag (this will keep the zipper into place).
8. Cut a piece of ribbon (28 cm / 11") and sew by hand the two ends to the lining near the opening gap, inside the bag.

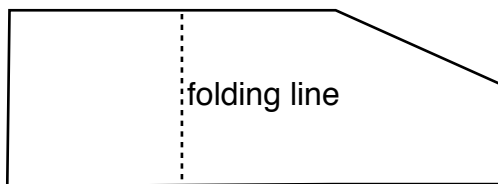


Black Clutch Tutorial ©2014 France Nadeau

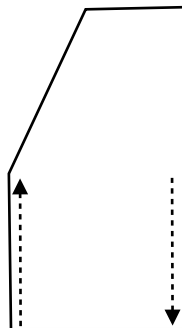
Little Pouch



1. The little pouch is made of two pieces: one with outside fabric and one with lining. Cut the fabric and the lining following the measurements above.
2. Sew the two pieces together, right sides together, all around but leaving a 5 cm / 2" opening. Turn inside out. Iron all around. Sew all around at 3 mm / 1/8" from the edge.
3. Fold, wrong sides together, to form the pouch. Do not iron.



4. Sew the two sides, over the stitch made at step 2.



5. Fold the flap and iron into place.